

NUNC DIMITTIS

William Alfred Maw

Professor W. A. Maw died suddenly in Washington, D.C., on June 2nd. He was born in 1893, and retired in 1959 as Professor and Chairman of the Department of Poultry Husbandry at Macdonald College of McGill University.

He served from 1930 until 1944 as Secretary-Treasurer of the Poultry Science Association, was Second Vice-President from 1944 to 1946, First Vice-President in 1946-1947 and President in 1947-1948. In that year he was made a Fellow of the Association.

Professor Maw had been associated with the poultry industry in Quebec and with Macdonald College for some forty years. He obtained his B.S.A. degree in 1920 and joined the staff as Assistant in the Poultry Department. He received a M.S.A. from McGill University in 1925. Appointed Lecturer in 1923, he advanced through the ranks to become Professor and Chairman of

the Department.

During this long tenure he was actively engaged in teaching, research and extension, and worked tirelessly for the development of the poultry industry in Quebec and Canada. He participated in many industry activities and held numerous executive posts during his extended career, and held membership in many scientific and professional societies. He was widely known and had travelled extensively in connection with poultry work in Canada and the United States.

His many friends in his chosen field, members of the Poultry Science Association, his former colleagues and students at Macdonald College, will remember his vigorous personality, his broad knowledge of poultry husbandry, and the zeal with which he worked in the development of the Canadian poultry industry, and the growth of the Poultry Science Association.

NEWS AND NOTES

(Continued from page 1296)

should be sent prepaid to the Rice Memorial Library, Cornell University, Ithaca, N.Y.

KENTUCKY NOTES

James E. Humphrey, Extension Specialist in Poultry, Agricultural Extension Service, University of Kentucky, Lexington, retired June 30th after more than forty years of service.

He was born in Muhlenberg County, Kentucky, in 1894. He is a veteran of World War I, and received a B.Sc. degree from the University of Kentucky in 1923. He was appointed Field Agent in Poultry in September of that year, and has worked in Poultry Extension ever since, with the exception of one year when he was a Coordinator of the National Poultry Improvement Plan.

In 1924 he helped organize the Certified Breeders' Association in Kentucky. In 1925 a state organization was organized to implement a plan for poultry improvement, and 10 years later, this organization became the official state agency. Mr. Humphrey has been a Director and Contact Representative for Kentucky since 1938. He is Secretary-Treasurer of the Kentucky Turkey Association.

Much of his work was directed toward the young people of the State. He has assisted County Agents and Vocational Agriculture teachers in de-

veloping poultry judging teams, some of which have won State and National honors. He served for 7 years as Chairman of the Committee which arranges and conducts the Invitational Inter-State 4-H Poultry Judging Contest held in Chicago each year.

He received the Meritorious Service Award of Epsilon Sigma Phi, and was recognized by the Kentucky Agricultural Extension Service "for long and faithful service." In 1963 he was elected a Fellow of the Poultry Science Association.

P.B.A. NOTES

The following officers were elected at the annual meeting of the Poultry Breeders of America, held in Kansas City, Missouri: President—E. E. Schnetzler, De Kalb Agricultural Association, De Kalb, Illinois; First Vice-President—G. Brown, Brown's Led Brest, Inc., Springdale, Arkansas; Second Vice-President—H. B. Wallace, Hy-Line Poultry Farms, Des Moines, Iowa; and Secretary-Treasurer, D. M. Turnbull, 521 East 63rd St., Kansas City, Missouri 64110.

J. Hill, Babcock Poultry Farm, Ithaca, New York, is Chairman of the 1965 Roundtable. F. Schultz, Animal Breeding Consultants, Livermore, California, will edit the 1964 *Proceedings*.

(Continued on page 1384)

NEWS AND NOTES

(Continued from page 1380)

The new member of the Committee is G. E. Dickerson, Kimber Farms, Inc., Fremont, California.

IAPI NOTES

Frank Murray, Jr., Vice-President of Operations, Polo Food Products Co., Chicago, has been named Chairman of the Poultry Processing Committee of the Institute of American Poultry Industries.

He has been with Polo Food Products for four years, first as Production Manager and then as Vice-President of Operations. He is a graduate of the University of Missouri, majoring in Poultry Husbandry. His early experience included poultry farm and breeder hen management. He has done economic research and established an integrated quality egg program, as well as broiler and turkey field work. He has processing management experience with Missouri Farmers Association and Hess Michigolden Duck operations.

He is a U.S. Marine Corps Veteran, having served in World War II and Korea. He is a member of the Institute of Food Technologists.

AFMA NOTES

At the annual meeting of the American Feed Manufacturers Association held in Chicago, the following officers were elected: Chairman of the Board of Directors—Claude I. Carter, Vice-Chairman of the Board—G. A. Ensminger, President—W. E. Glennon, Vice-President—Oakley M. Ray, and Secretary-Treasurer—W. T. Diamond.

U.S. CONGRESS COMMITTEE

The United States Participation Committee of the 13th World's Poultry Congress has appointed International Travel Service, Inc., 116 South Wabash Avenue, Chicago, Illinois 60603, as official travel agent.

J. Winkeljohn, Group Travel Director for ITS, has returned recently from Moscow, site of the 1966 World's Poultry Congress. The exact dates of the Congress will be announced by mid-September. It is anticipated that the event will be held at the University of Moscow in late summer.

M. C. Small, Mount Morris, Illinois, is responsible for handling travel arrangements in cooperation with the International Travel Service. Harry E. Drews, Springfield, Missouri, will coordinate industry contacts that will be combined with travel in other countries by American participants going to and returning from the Congress.

IAPI NOTES

Harold M. Williams of the Institute of American Poultry Industries, Chicago, was named the Technical Representative for Poultry Products by the Office of Special Representative for Trade Negotiations, effective July 1st.

AVMA NOTES

At the 101st annual meeting of the American Veterinary Medical Association, held in Chicago, Illinois, Dr. Merton R. Clarkson of Arlington, Virginia, assumed office as President.

Dr. Clarkson was Associate Administrator of the Agricultural Research Service, United States Department of Agriculture, until July 12, when he retired from 34 years of government service. In this capacity he shared, with the Administrator, the responsibility for administering ARS research and disease eradication activities.

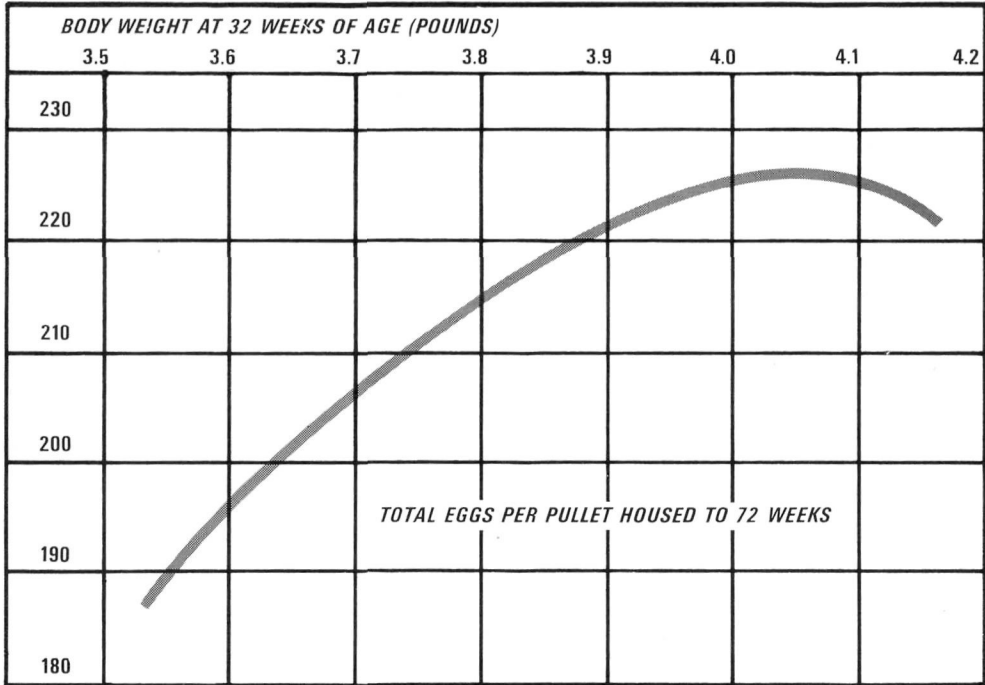
OHIO NOTES

A. R. Winter, Chairman of the Department of Poultry Science of the Ohio State University, Columbus and the Ohio Agricultural Experiment Station, Wooster, has been appointed advisor to the Punjab Agricultural University, Ludhiana, India, under a contract between the University and the U.S. Agency for International Development. He is the fourth member of the staff of the Department which has participated in this contract program since 1955. The others include Professor E. L. Dakan, Professor R. E. Cray and Dr. P. C. Clayton. Dr. Clayton is still in India under the program, but is located at Rajasthan Agricultural College, Udaipur.

Dr. and Mrs. Winter arrived in India in late June and he assumed his duties on July 1, 1964, as advisor to the Poultry Department in helping develop their post-graduate program.

M. G. McCartney has been appointed Acting Chairman of the Department of Poultry Science at both Columbus and Wooster.

E. C. Naber, Professor of Poultry Science at Ohio State University, has accepted a Visiting Professorship with the Department of Poultry Science at the University of Wisconsin for the academic year beginning September, 1964. Dr. Naber will be participating in the ongoing research and resident instruction program of the department. During his absence from the Ohio State University, Dr. S. P. Touchburn will be in charge of the nutrition research at both Columbus and Wooster.



New information on THE IMPORTANCE OF BODY WEIGHT IN LAYER PERFORMANCE

Earlier reports from Kimber field trials at 30 to 50 commercial locations, using chicks from the same matings, showed that management can make a difference of 75 eggs per hen.

Further research now indicates that body weight at 32 weeks of age is a critical factor in layer performance. Average body weight of Kimberchiks at this age ranged from 3.5 to 4.3 pounds at the different locations, and egg production was highest in the flocks that ranged from 3.9 to 4.1 pounds.

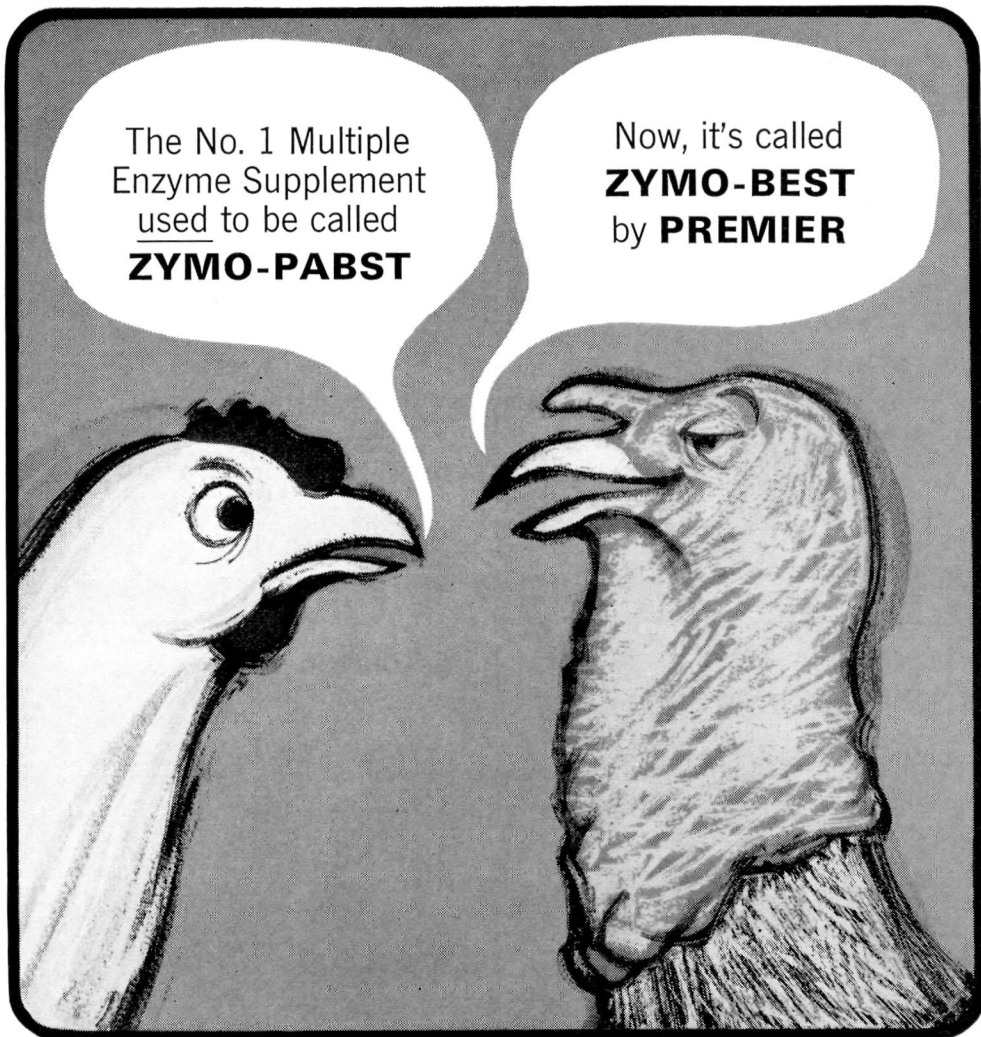
As flock-average body weights declined from 4.0 to 3.6 pounds, production to 72 weeks was reduced by 30 eggs per pullet housed. The rate of decline in production per 0.1 pound reduction in body weight progressed from 3 to 11 eggs.

For more information on these findings, which also relate livability, and egg weight and quality to body weight, plus recommendations for detecting and preventing underweight, please write to our Research Center in Fremont, California.



KimberCHIKS[®]

P. O. Box 2008, Fremont, California • In Europe, Agresco S. A.,
Centre International Rogier, Bureau 2237, Brussels 1, Belgium



The No. 1 Multiple
Enzyme Supplement
used to be called
ZYMO-PABST

Now, it's called
ZYMO-BEST
by **PREMIER**

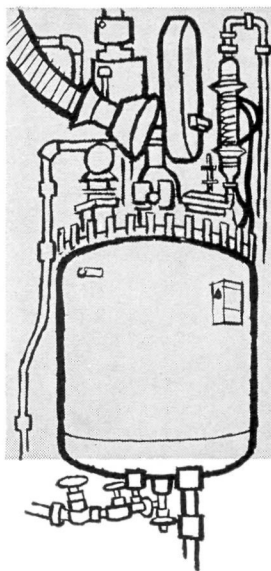
We changed the name...but we didn't change the product.

You get the only multiple enzyme supplement with guaranteed enzyme contents. ZYMO-BEST contains a combination of enzymes that is today's top profit-maker. It unlocks the hidden energy values in your feeds. It speeds growth, cuts feed costs, boosts egg production, aids in the prevention and control of "pasting."

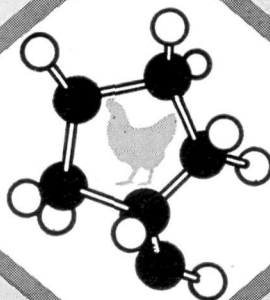
The complete line of Pabst feed supplements is now produced and sold, under new trade names, by PREMIER, a Pabst subsidiary organized for service and leadership in animal nutrition. Call or write today for details on Premier feed supplements, including latest field tests on ZYMO-BEST.



PREMIER Malt Products, Inc.
ANIMAL FEED DIVISION
1037 W. McKinley Ave. • Milwaukee, Wis. 53201
TWX 414-273-4317 • Phone BRoadway 1-4272



**BASIC
RESEARCH PLUS
BASIC
CHEMICAL
PRODUCTION...**



**are both part of the Whitmoyer
integrated program aimed at...**

improving livestock and poultry health. The "Products of Scientific Merit" made available through this program are the result of the combined efforts of highly skilled chemists, bacteriologists, veterinarians, nutritionists, and husbandmen.

A typical example is WHITSYN — a synergistic, chemotherapeutic drug for treating coccidiosis. WHITSYN destroys the organism, yet produces no serious side effects. In either the liquid or powder form, WHITSYN* acts fast . . . cutting off life-sustaining substances

- *WHITSYN-S —a treatment for use in the drinking water
- WHITSYN-5 —a treatment for use in the feed
- WHITSYN-10 —a preventive for use in the feed

Over 3 decades of service to the animal, poultry and feed industries.



IN CANADA: Whitmoyer Laboratories, Ltd., Port Credit (Toronto Twp.), Ontario
IN MEXICO: Whitmoyer de Mexico S.A., Lago Peypus No. 191, Mexico City 17 D. F.
IN ENGLAND: Whitmoyer-Reed, Ltd., Hertford Road, Barking, Essex

of this deadly parasite through a multiple, bio-chemical blocking process.

This exclusive patented product, developed by Whitmoyer research, is but one of the many Whitmoyer products that have played such a key role in the improvement of poultry and livestock health the World over.

We will be glad to send you data on WHITSYN as well as reports by independent workers confirming the unique synergism found in WHITSYN-type drug combinations.

**THE
WHITMOYER
RESEARCH
REVIEW**



—a bi-monthly digest, designed to help keep you abreast of the latest research developments in the poultry and livestock field, is available on a complimentary basis. Write us if you would like to receive it.

ONLY **D&M** MAKES
 THE DIFFERENT
 FOWL CHOLERA BACTERIN
 THAT IS BETTER
 3 WAYS

1 FASTER *
 ACTION

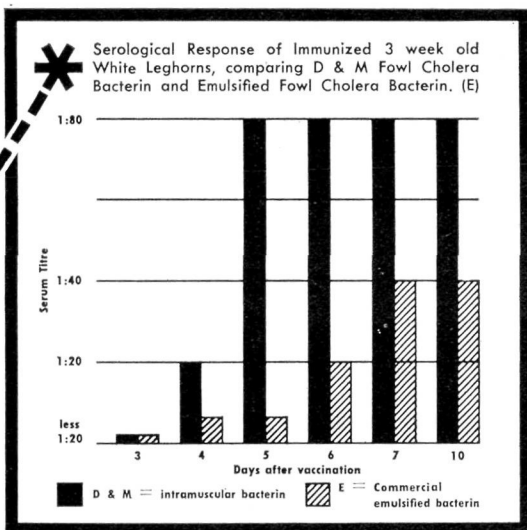
D & M Fowl Cholera Bacterin is specially formulated; birds develop effective antibody levels in 4-5 days, compared to 2 weeks or more with emulsion type products. Unsurpassed for routine preventive treatment, D & M Bacterin is also recommended in flock treatment after fowl cholera has been diagnosed.

2 EASIER
 APPLICATION

D & M Bacterin is given by intramuscular injection in breast or thigh. This procedure is faster, easier and safer — and avoids the risk of sterile abscesses sometimes found with subcutaneous use of oil emulsion bacterins. "Handling stress" also is minimized with the simpler intramuscular procedure.

3 BETTER
 PROTECTION

The unique blend of *Pasturella Avicida* strains in D & M Bacterin permits unmatched reliability of protection under field conditions. No bacterin now available gives 100% protection against all strains of *Pasturella* found in chickens and turkeys, but D & M Bacterin has repeatedly given effective protection where other products have been used without success.



YOUR BEST MEANS OF EFFECTIVE CONTROL

D & M Fowl Cholera Bacterin is a specially formulated, water based suspension of killed *Pasturella Avicida* organisms. The process of manufacture, the formulation, and the strains of organisms used are different from any other fowl cholera bacterin. Its use is safe — no stress is imposed on the bird other than that of handling and the injection procedure.

When given prophylactically, D & M Fowl Cholera Bacterin is an effective disease preventive. A leading breeder, who had experienced fowl cholera for several successive years, used 200,000 doses and has eliminated the disease to date. In a University trial a flock of 10,000 pullets were vaccinated with D & M Bacterin 3 weeks before they were moved into pens that had housed layers infected with fowl cholera. No drop in egg production and no signs of cholera were noted after 11 months.

In field trials including 354,000 birds, most of which had not responded to previous medication for natural outbreaks of fowl cholera, there was a drop in mortality within 8 days after vaccination with D & M Bacterin. There was no increase in mortality after removal of medication (usually 4-5 days after injection) and no birds had developed chronic symptoms up to 1 year after vaccination.

If you'd like to see facts and figures, write on your letterhead for copy of an information bulletin recently distributed to university poultry departments and to state diagnostic laboratories.

D & M Cholera Bacterin is made by the makers of Coccivac® coccidiosis vaccine.

Sterwin Chemicals, Inc. ANIMAL HEALTH DIVISION
 Subsidiary of Sterling Drug Inc.

1450 Broadway, New York, New York 10018

Coccivac is the registered Trade Mark of Dorn and Mitchell Laboratories, Inc.

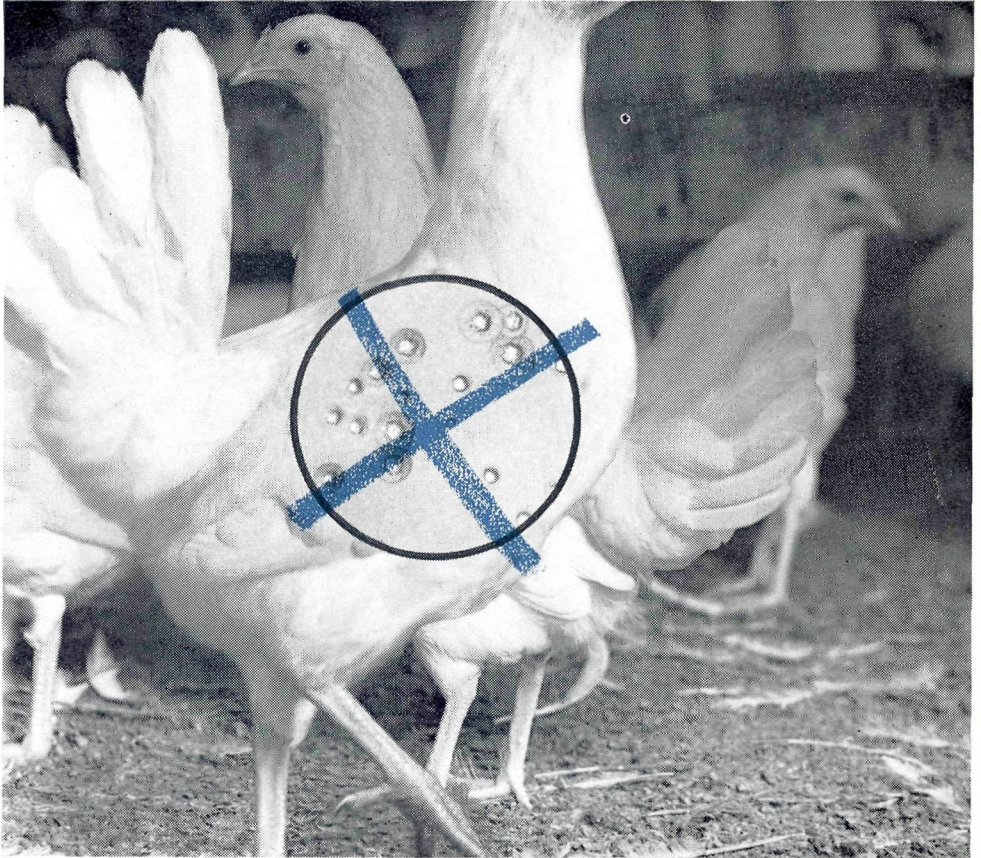


At Heisdorf & Nelson

We believe that the future of the poultry industry and of Heisdorf & Nelson is dependent upon a sound research program. Emphasis has always been and will continue to be placed on our genetic and health research programs.



Quality as Consistent as Time Itself
P. O. Box AA Kirkland, Wash.



Mycoplasma gallisepticum PPLo, greatly enlarged

TYLAN: drug of choice for CRD control



No other drug prevents CRD as effectively as Tylan. Tylan prevention programs are effective because Tylan kills the PPLo that cause CRD *before* an outbreak occurs.

The Tylan prevention program is economically sound. When it's administered as recommended, Tylan can more than pay for itself in improved flock performance. Tylan protects broilers, layer replacements, or breeding stock against

CRD from the day they're hatched. It improves livability, feed efficiency, and rate of gain. It helps layer replacements and breeders obtain proper growth and maintain high egg production.

Tylan is the antibiotic you can confidently recommend to *every* poultryman for effective CRD control.

TYLAN[®]
(Tylosin Tartrate, Elanco)

OUTSTANDING DEKALB RESEARCH



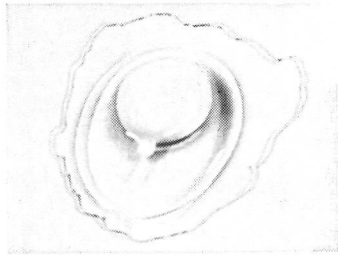
has built
**TOP QUALITY and
TOP PERFORMANCE**
into One of
**America's Leading
Egg Machines**

DEKALB PROFIT PULLETS

Precision-bred by DeKalb Poultry Research, DeKalb Profit Pullets have gained an enviable reputation for livability—high production—long lay—feed efficiency and top inside and outside egg quality.



DeKalb's distinguished staff of Poultry Research Specialists—left to right in the photo above: Dr. W. E. Briles, Immunogeneticist; Dr. R. Rumsey, Pathologist; Dr. J. R. E. Taylor, Pathologist; O. Osheim, Geneticist; Dr. Dewey L. Harris, Geneticist; Dr. E. E. Schnetzler, Research Director; Dr. R. Shrode, Population Geneticist; Dr. D. G. Jones, Geneticist; and L. Williams, Geneticist.



DeKalb Eggs have the interior and exterior qualities egg buyers demand. They're Sunshine In a Shell.

"DEKALB" is a Registered Brand Name.

DEKALB AGRICULTURAL ASSOCIATION, INC., DEKALB, ILLINOIS
Commercial Producers & Distributors of DeKalb Corn, Chix & Sorghum

DEKALB[®] PROFIT PULLETS

KEEP RECORDS AND YOU'LL KEEP DEKALB

feed profiles

FEED PROFILES are published by Corn Products Company for animal nutritionists. These reports cover current research with feed products derived from the wet milling of corn and milo. Such products are finding an increasingly important position in the sound, economical formulation of today's poultry rations.

60% Corn Gluten Meal for poultry—Complete analyses on this new product are reported, including new data on metabolizable energy, xanthophylls content, amino acid pattern. Results of a study involving computer formula calculations are described. (FEED PROFILES #1,5,11).

Corn Gluten Feed in poultry nutrition—Studies with egg-type pullets show that Corn Gluten Feed at the 10% level can be used successfully in an all-mash layer ration. Egg production, egg size, feed efficiency, livability, all remained unchanged. Similar successful ingredient replacement studies at the 15% level in pullet grower rations, and the 5% level in chick starter rations, are reported. (FEED PROFILES #2,10,16).

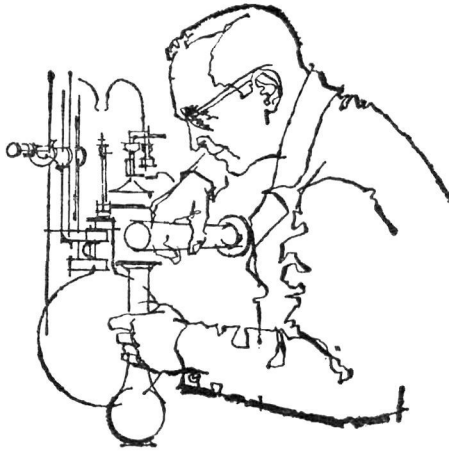
The value of Mazoform in poultry nutrition—Growth studies show Mazoform Condensed Fermented Corn Extractives to be a rich source of unidentified growth factors. Analyses are given for amino acid content, metabolizable energy, protein, vitamins, minerals. Data are presented on Mazoform as a pellet binder and as an ingredient which makes feed more palatable for poult, chicks, hens. (FEED PROFILES #12,13,14,15).

Broiler pigmentation—FEED PROFILE #3 discusses the factors which influence skin coloring, and the pigmentation response of broilers to several common feed ingredients in the diet.

If you would like copies of any of these FEED PROFILES—or wish to receive new reports regularly—please write on your letterhead to—



CORN PRODUCTS COMPANY
Feed Products Division, Att. Dr. V. Heiman
10 East 56th Street, New York, N.Y. 10022



Most vital ingredient

You can't measure it. You can't even see it. And yet it's the most vital ingredient in Dr. Salsbury's poultry health products.

This ingredient is *research*. More than 40 years of it. Dr. Salsbury's research assures the dependability of each of its more than 50 feed additives, biologics, and pharmaceuticals.

In truth, however, it's *what goes into* this research that really counts: The painstaking years of quality-control testing and perfecting in the laboratory and on test farms by Dr. Salsbury's team of research scientists. The generous co-operation from leading agricultural colleges and experiment stations. And the actual proof of performance in flocks across the nation.

Dr. Salsbury's familiar trademark is the seal that assures their products do contain this most vital ingredient. It's our pledge that poultry raisers receive all the benefits that modern research can provide.



DR. SALSBUY'S LABORATORIES • Charles City, Iowa, U.S.A.

DR. SALSBUY'S LABORATORIES OF CANADA, LTD. • Woodstock, Ontario



Lime Crest helps poultry three ways

1 **Lime Crest Calcite Crystals**, the calcium supplement that does the work of grit yet often costs less than oyster shell alone . . . provides the extra calcium layers need to produce strong shells throughout the laying year.

2 **Lime Crest Litter-Kepe**, the finely pulverized limestone—even finer than hydrated lime and much less expensive—that coats litter thoroughly, prevents sticking and caking, aids air circulation, keeps litter dry longer.

3 **Lime Crest Trace Mineral Pre-Mixes**, the choice of leading feed manufacturers, protect rations against possible mineral deficiencies. Rigid laboratory control guarantees their uniform high quality.



LIMESTONE PRODUCTS CORPORATION OF AMERICA
NEWTON, NEW JERSEY

GEORGE BANTA COMPANY, INC., MENASHA, WISCONSIN